

ARYENVARSHA[®]

MONOSETS & SUBMERSIBLE PUMPSETS

Pump Selection & Performance Chart



ARYEN MOTORS (INDIA) P. LTD.,
Since 1987



ARYENVARSHA[®]

Mfrs. MONOSETS & SUBMERSIBLE PUMPSETS





ABOUT ARYEN

ARYEN MOTORS INDIA P.LTD., engaged in manufacturing a wide range of pumps and motors for the past three decades. We do cutting edge R & D and have unparalleled commitment to excellence. Our area of concentration are domestic and agriculture pumpsets namely Vertical and Horizontal Open well Submersible Pumps, 4", 5" and 6" Inch Bore well Submersible pumpsets, Monosets.etc.,

Our Company always keeps pace with the changing scenario of various field conditions, adopting latest development in design and manufacturing technique, with outstanding solutions every time. Every product we manufacture undergoes performance testing to suit the field requirements. At **ARYEN**, we believe firmly that our customers are our asset that constantly drives us to achieve stratospheric heights.

ARYEN MOTORS was established in the year 2002 and C.R.Shanmughasundaram and S.Saikrishnan are the Directors of the company.

Mr.C.R.Shanmughasundaram M.E., is the Managing Director of our company who has more than 38 years of experience in Mechanical & Electrical, Engg fields. His Portfolios are Quality, Finance, R&D and general administration.

He has also held various honorary posts like:

- PRESIDENT SIEMA from 2006 to 2008
- PRESIDENT SI'TARC from 2009 to 2011
- VICE PRESIDENT COINDIA from 2012 to 2014

Mr. S.Saikrishnan B.E., (S.W.Prod) graduated from PSG College of Technology has been taking care of the day to day activities in production & marketing activities. He is ably assisted by sincere & well trained staff in all the departments for expertise.



Mr. C.R.Shanmughasundaram M.E
Managing Director



Mr. S.Saikrishnan B.E
Director



CERTIFICATE **TUV NORD**

Management system as per
ISO 9001 : 2008

In accordance with TÜV INDIA procedures, it is hereby certified that

ARYEN MOTORS INDIA PVT. LTD.
128/1, Narasimmanaiken Palayam Village,
Mettupalayam Road, Coimbatore - 641 031, Tamilnadu,
India



applies a quality management system in line with the above standard for the following scope

Design, Manufacture, Supply and Service of Borewell Submersible Pumpsets and Openwell Submersible Pumpsets

Certificate Registration No. **QM 09 00227**
Audit Report No. **Q 3703/2011**

Valid until **29.05.2017**
Valid from **30.05.2014**
Initial Certification **30.05.2011**

S.K. Kulkarni

Certification Body
at TÜV INDIA PVT. LTD.

Issue **21.04.2014**
Place : **Mumbai**

This certification was conducted in accordance with the TÜV INDIA auditing and certification procedures and is subject to regular surveillance audits.

TUV India Pvt. Ltd., 801, Raheja Plaza - 1, L.B.S. Marg, Ghatkopar (W), Mumbai - 400 086, India www.tuvindia.co.in



CONTENTS



PAGE
01

ARYEN Radial Flow Models
Performance Chart for
6.0" Inch Borewell.



PAGE
04

ARYEN Mixed Flow Models
Performance Chart for
6.0" Inch Borewell.



PAGE
05

**ARYEN 50 Feet Radial Flow
Stainless Steel Models**
Performance Chart for
6.0" Inch Borewell.



PAGE
07

Motor **V5** (120mm) with **V4** (98Φ)

Submersible Pumpsets .

ARYENVARSHA HDJ - High Depth Jacket Models,
HDC - High Depth Stainless Steel Cup Models
Suitable for **5" (128mm)** & above Borewell.

HDJ PUMPS



CONTENTS



PAGE
08

V4 - Submersible Pumpsets.

ARYENVARSHA HDJ - High Depth Jacket Models,
HDC - High Depth Stainless Steel Cup Models
Suitable for **4" (100mm)** Borewell.

**First in India
Most Advanced Motor Technology**

4" & 5" MOTOR



PAGE
09

ARYENVARSHA - TS,TT Models

Performance Values of **V4** Submersible Pumpsets
Suitable for **4.0" (100mm)** Borewell.



PAGE
11

ARYENVARSHA Well Series (AWS)

V4 Submersible Pumpsets, Suitable
for **4.0" (100mm)**
Suitable for **4.0" (100mm)** Borewell.

CONTENTS



PAGE
12

ARYENVARSHA Vertical Openwell Submersible Pumpsets
AVW Models - Performance Chart,
65 mm Delivery Size.



PAGE
13

ARYENVARSHA Horizontal Openwell Submersible Pumpsets
3 Phase, 400 Volts, AC Supply,
Wet Type, Cat-B, S1 Duty.



PAGE
14

ARYENVARSHA Horizontal Openwell Submersible Pumpsets. TURBO SERIES Models - Performance Chart
3 Phase, 380Volts, AC Supply, 50Hz, Wet Type, Cat-B, S1 Duty.



PAGE
15

ARYENVARSHA Domestic Models

PAGE
16

Cable Selection Chart

PAGE
17

Discharge Output Chart

PAGE
18

Friction Head Loss for GI Pipes

PAGE
19

Friction Head Loss for Rigid PVC Pipes

CONTENTS

PAGE
20

Length of Straight Pipe
in Metres Giving Equivalent
Head Loss in Pipe Fittings,
Valves, Etc.

PAGE
21

Single Phase Control Panel,
240 Volts \pm 10%,
50 Hz \pm 5%,
AC Power Supply

PAGE
21

6" Borewell
Submersible
Motor Details

PAGE
23

4" Borewell
Submersible Motor
Details - TS / TT

PAGE
24

4" Borewell Submersible
Motor Details - (HD)

PAGE
25

5" Borewell Submersible
Motor Details

PAGE
26

Vertical Openwell
Submersible Pumpset
Details

PAGE
27

Horizontal Openwell
Submersible Pumpset
Details (AHW Series)

PAGE
28

Horizontal Openwell
Submersible Pumpset
Details (TURBO Series)

PAGE
29

6" Radial Flow
Pump Details

PAGE
30

6" Mixed Flow
Pump Details

PAGE
31

6" AR-50
Pump Details

PAGE
32

4" Pump Details - (TS / TT)

PAGE
33

4" Pump Details - (HDJ)

PAGE
34 & 35

Examples show different combination of Wet and
Dry cavities in a Bore well having
maximum yield of 10 LPS in flow and pump
capacity of maximum 10 LPS output

ARYENVARSHA V6 SUBMERSIBLE PUMPSETS

ARYEN Radial Flow Models - Performance Chart for 6.0" Inch Borewell.

2.0" Inch Outlet Dia, 3 Phase, 400 Volts, AC Supply, 50 Hz, Wet Type, Cat-B, S1 Duty.



Discharge in LPM				510	420	360	300	240	210	Shut off in mtrs
S.No	Model	HP	Stages	Delivery Size 50 mm						
1	AR 3/3	3	3	12	21	27	30	32	35	37
2	● AR 4/4	4	4	16	28	36	40	43	47	50
3	●★ ARE 5/5	5	5	20	35	43	50	53	55	60
4	●★ ARE 6/6	6	6	24	42	52	60	64	66	72
5	●★ ARE 7/7	7.5	7	28	49	61	70	75	77	85
6	●★ ARE 7/8	7.5	8	32	56	68	80	85	88	96
7	●★ ARE 10/10	10	10	40	68	85	98	105	110	120
8	● AR 12/12	12.5	12	48	84	104	120	128	132	145
9	● AR 12/13	12.5	13	52	92	114	131	140	144	156
10	● AR 15/15	15	15	60	106	132	150	162	166	182
11	● AR 15/16	15	16	64	114	142	160	173	178	194
12	AR 17/17	17.5	17	68	122	150	170	184	190	206
13	AR 17/18	17.5	18	72	130	160	182	195	203	218
14	AR 20/20	20	20	80	136	170	196	210	221	240



Discharge in LPM				450	390	330	300	240	180	Shut off in mtrs
S.No	Model	HP	Stages	Delivery Size 50 mm						
15	AR 3/4	3	4	16	24	30	33	36	40	48
16	● AR 4/5	4	5	20	30	38	42	45	50	60
17	●★ ARE 5/6	5	6	24	36	44	48	54	60	69
18	● AR 6/7	6	7	28	42	53	56	63	70	81
19	●★ ARE 6/8	6	8	32	48	60	64	72	80	92
20	●★ ARE 7/10	7.5	10	40	60	73	80	90	100	115
21	●★ ARE 10/12	10	12	48	72	88	97	108	120	138
22	●★ ARE 12/14	12.5	14	56	85	106	112	126	140	162
23	●★ ARE 12/15	12.5	15	60	90	113	120	135	150	173
24	● AR 12/16	12.5	16	64	96	121	128	145	160	185
25	● AR 15/18	15	18	72	108	132	145	162	180	210
26	● AR 15/20	15	20	80	120	147	162	180	200	234
27	● AR 17/20	17.5	20	82	123	150	163	183	203	240
28	● AR 17/22	17.5	22	90	135	165	180	201	223	264
29	● AR 17/25	17.5	25	100	150	182	200	223	244	290
30	AR 20/25	20	25	100	150	184	200	225	246	290



★ Star Rated ● ISI Marking

Note : Due to continuous improvements, specifications, marking and designs are subject to change without prior notice.

ARYENVARSHA V6 SUBMERSIBLE PUMPSETS

ARYEN Radial Flow Models - Performance Chart for 6.0" Inch Borewell.

2.0" Inch Outlet Dia, 3 Phase, 400 Volts, AC Supply, 50 Hz, Wet Type, Cat-B, S1 Duty.



Discharge in LPM					360	300	240	210	180	150	Shut off in mtrs
S.No	Model	HP	Stages	Rated Head in Metres	Delivery Size 50 mm						
31	● AR 3/5	3	5		20	30	38	43	45	48	56
32	● AR 4/6	4	6		24	36	46	52	54	58	68
33	● AR 5/7	5	7		27	42	53	60	63	68	78
34	●★ ARE 5/8	5	8		30	48	60	68	72	76	88
35	● AR 6/10	6	10		38	60	76	85	91	95	110
36	●★ ARE 7/12	7.5	12		45	72	90	103	109	114	132
37	● ARE 10/15	10	15		57	90	113	128	135	143	165
38	●★ ARE 10/16	10	16		60	95	120	136	144	152	175
39	● ARE 12/18	12.5	18		72	110	140	158	167	177	203
40	●★ ARE 12/20	12.5	20		80	122	155	170	180	190	220
41	● ARE 15/24	15	24		90	146	183	206	216	230	265
42	●★ ARE 15/25	15	25		100	152	190	214	225	238	276
43	● ARE 17/28	17.5	28		107	166	210	238	252	269	320
44	●★ ARE 17/30	17.5	30		112	178	225	255	270	288	335
45	● ARE 20/30	20	30		116	180	227	258	272	290	345
46	●★ ARE 20/32	20	32		120	192	242	275	290	305	355
47	AR 20/35	20	35	131	210	265	300	317	333	388	



Discharge in LPM					270	240	210	180	150	120	Shut off in mtrs
S.No	Model	HP	Stages	Rated Head in Metres							
48	● AR 3/6	3	6		33	40	45	50	53	57	70
49	● AR 4/8	4	8		44	54	60	67	71	76	94
50	●★ ARE 5/10	5	10		54	65	74	82	88	95	113
51	● AR 6/12	6	12		67	78	90	98	106	112	136
52	●★ ARE 7/14	7.5	14		77	90	104	117	126	135	165
53	●★ ARE 7/15	7.5	15		82	96	111	125	135	144	175
54	●★ ARE 7/16	7.5	16		88	103	119	134	145	154	188
55	● ARE 10/18	10	18		92	111	131	146	158	167	203
56	●★ ARE 10/20	10	20		102	130	145	162	175	185	225
57	● AR 12/22	12.5	22		99	124	154	173	191	206	245
58	● AR 12/24	12.5	24		108	132	168	188	208	224	270
59	● ARE 12/25	12.5	25		120	138	175	196	217	234	280
60	●★ ARE 12/27	12.5	27		130	150	190	212	235	253	303
61	● ARE 15/28	15	28		135	156	197	220	244	263	314
62	●★ ARE 15/30	15	30		140	165	210	235	260	280	335
63	● ARE 17/32	17.5	32		149	176	224	251	277	299	357
64	● ARE 17/33	17.5	33	154	182	231	259	286	308	369	
65	●★ ARE 17/35	17.5	35	170	196	250	280	300	323	390	
66	● AR 20/38	20	38	185	213	271	304	325	350	423	
67	●★ AR 20/40	20	40	195	225	285	320	345	370	445	

ARYENVARSHA V6 SUBMERSIBLE PUMPSETS

ARYEN Radial Flow Models - Performance Chart for 6.0" Inch Borewell.

2.0" Inch Outlet Dia, 3 Phase, 400 Volts, AC Supply, 50 Hz, Wet Type, Cat-B, S1 Duty.



Discharge in LPM				260	210	180	150	120	90	Shut off in mtrs
S.No	Model	HP	Stages	Delivery Size 50 mm						
68	● AR 3/8	3	8	27	48	56	62	67	74	87
69	● AR 4/10	4	10	34	60	70	78	84	93	110
70	● ARE 5/12	5	12	40	72	84	92	100	110	130
71	● AR 6/15	6	15	50	90	105	114	125	138	165
72	● AR 7/18	7.5	18	60	108	126	139	149	162	199
73	●★ ARE 7/20	7.5	20	66	120	140	154	165	180	216
74	● AR 10/22	10	22	75	125	150	163	173	206	242
75	● AR 10/24	10	24	81	140	168	182	195	213	265
76	AR 10/25	10	25	85	147	175	190	205	222	275
77	● ARE 12/28	12.5	28	95	165	196	213	230	245	308
78	●★ ARE 12/30	12.5	30	100	180	210	232	250	270	330
79	● ARE 15/33	15	33	110	198	231	255	275	297	363
80	● ARE 15/35	15	35	116	210	245	266	291	321	384
81	●★ ARE 15/37	15	37	123	222	259	281	308	340	406
82	● AR 15/40	15	40	133	240	280	302	330	365	435
83	● AR 17/40	15	40	134	242	281	306	334	367	437

Rated Head in Metres



Discharge in LPM				180	150	120	100	80	60	Shut off in mtrs
S.No	Model	HP	Stages	Delivery Size 50 mm						
84	AR 3/9	3	9	32	51	60	67	71	76	87
85	● AR 3/10	3	10	36	57	66	75	79	84	97
86	● AR 5/15	5	15	54	85	100	113	118	126	146
87	AR 5/17	5	17	62	96	113	128	134	143	165
88	AR 6/18	6	18	65	102	120	133	141	151	173
89	AR 6/20	6	20	72	113	133	147	156	168	192
90	ARE 7/21	7.5	21	75	118	140	158	164	176	206
91	●★ ARE 7/22	7.5	22	79	124	147	166	172	189	215
92	ARE 7/23	7.5	23	82	129	154	173	180	193	225
93	ARE 7/24	7.5	24	85	135	160	181	187	206	235
94	●★ ARE 7/25	7.5	25	89	140	167	188	195	210	245
95	AR 10/30	10	30	105	170	200	226	235	252	292
96	AR 12/35	12.5	35	123	198	233	264	274	294	341
97	AR 12/40	12.5	40	140	226	266	294	312	336	385

Rated Head in Metres



★ Star Rated ● ISI Marking

Note : Due to continuous improvements, specifications, marking and designs are subject to change without prior notice.

ARYENVARSHA V6 SUBMERSIBLE PUMPSETS

ARYEN Mixed Flow Models - Performance Chart for 6.0" Inch Borewell.

3 Phase, 400 Volts, AC Supply, 50 Hz, Wet Type, Cat-B, S1 Duty.



Discharge in LPM				S.No	Model	HP	Stages	Rated Head in Metres	780	660	540	480	420	360	Shut off in mtrs
									Delivery Size 65 mm						
1		AM 3/3	3	3					12	19	21	23	25	33	
2	●★	AME 5/5	5	5					20	31	34	38	41	55	
3	●★	AME 6/6	6	6					24	37	41	46	50	65	
4	●	AM 7/7	7.5	7					28	44	48	54	58	76	
5		AM 7/8	7.5	8					32	49	54	61	65	87	
6		AM 10/9	10	9					36	56	62	68	74	98	
7	●	AM 10/10	10	10					40	62	68	76	83	110	
8		AM 12/12	12.5	12					48	75	82	92	98	130	
9		AM 15/15	15	15					60	93	102	114	123	163	
10		AM 17/17	17.5	17					68	105	116	130	140	185	
11		AM 20/20	20	20					80	124	136	153	165	218	
12	●★	AME 5/4	5	4				14	25	31	35	37	39	44	
13	●★	AME 6/5	6	5				16	28	36	42	46	48	55	
14	●★	AME 7/6	7.5	6				20	35	45	50	54	56	66	
15	●	AM 10/8	10	8				26	46	60	66	73	75	90	
16	●	AM 12/10	12.5	10				33	59	76	84	91	94	110	
17	●	AM 15/12	15	12				40	70	90	101	108	113	132	
18		AM 17/14	17.5	14				46	81	106	116	126	132	155	
19		AM 20/16	20	16				53	94	120	133	145	151	176	



Discharge in LPM				S.No	Model	HP	Stages	Rated Head in Metres	1000	840	660	480	360	300	Shut off in mtrs
20		AM 3/2	3						2				10	12	
21		AM 5/3	5	3				15	18	21	24	26	28	33	
22		AM 6/4	6	4				20	23	27	32	36	38	44	
23		AM 7/5	7.5	5				25	30	35	40	44	47	55	
24		AM 10/6	10	6				30	36	42	48	54	57	66	
25		AM 10/7	10	7				35	42	49	56	63	67	78	
26		AM 12/8	12.5	8				40	48	56	64	72	76	88	
27		AM 15/9	15	9				45	54	63	72	80	85	100	
28		AM 15/10	15	10				50	60	70	80	88	95	110	
29		AM 20/12	20	12				60	72	85	96	108	115	133	

Discharge in LPM				S.No	Model	HP	Stages	Rated Head in Metres	1200	1000	800	620	450	360	Shut off in mtrs
30		AM 5/2	5						2				6	11	
31		AM 6/3	6	3				8	17	23	27	31	34	36	
32		AM 7/4	7.5	4				11	22	30	35	40	44	48	
33		AM 10/5	10	5				14	28	38	44	50	55	60	
34		AM 12/6	12.5	6				17	33	45	53	60	66	72	
35		AM 12/7	12.5	7				18	38	51	60	70	76	84	
36		AM 15/7	15	7				20	42	54	62	72	79	86	
37		AM 15/8	15	8				22	44	60	70	80	88	96	
38		AM 20/10	20	10				28	56	77	89	100	110	120	

★ Star Rated ● ISI Marking

Note : Due to continuous improvements, specifications, marking and designs are subject to change without prior notice.

ARYENVARSHA AR-50 MODEL STAINLESS STEEL DIFFUSERS AND IMPELLERS

ARYENVARSHA - AR 50 Models - Performance Chart

3 Phase, 400 Volts, AC Supply, 50 Hz, Wet Type, Cat-B, S1 Duty.

50 Feet

Head per stage in
V-6 Stainless Steel Pumps
Sand Proof



Discharge in LPM				400	360	300	270	250	220	Shut off in mtrs
S.No	Model	HP	Stages	Delivery Size 50 mm						
1	AR 50 - 5/5	5	5	30	40	50	55	60	65	76
2	AR 50 - 6/6	6	6	36	48	60	66	72	78	92
3	★ AR 50E - 7/8	7.5	8	48	64	80	88	96	104	122
4	★ AR 50E - 10/10	10	10	60	80	100	110	120	130	155
5	★ ARE 50 - 12/11	12.5	11	66	89	110	121	132	144	168
6	★ AR 50E - 12/12	12.5	12	72	95	120	132	144	156	180
7	AR 50 - 15/15	15	15	90	121	150	165	180	195	225
8	AR 50 - 17/16	17.5	16	96	129	160	176	192	208	244
9	AR 50 - 17/17	17.5	17	102	137	170	187	205	221	258
10	AR 50 - 20/20	20	20	121	160	200	220	240	260	300

Discharge in LPM				300	260	230	200	160	140	Shut off in mtrs
S.No	Model	HP	Stages	Delivery Size 50 mm						
11	AR 50 - 5/6	5	6	35	50	60	66	75	80	90
12	AR 50 - 6/8	6	8	48	67	80	88	100	107	122
13	● AR 50 - 7/10	7.5	10	60	84	100	110	125	133	150
14	AR 50 - 10/12	10	12	72	100	120	132	150	160	180
15	AR 50 - 12/15	12.5	15	90	125	150	165	188	200	225
16	AR 50 - 12/16	12.5	16	96	134	160	176	200	213	240
17	AR 50 - 15/18	15	18	108	150	180	200	225	240	270
18	AR 50 - 17/20	17.5	20	120	167	200	220	250	267	300

Discharge in LPM				240	210	190	160	130	110	Shut off in mtrs
S.No	Model	HP	Stages	Delivery Size 50 mm						
19	AR 50 - 5/8	5	8	47	60	75	87	100	106	122
20	AR 50 - 6/10	6	10	58	75	92	110	125	135	152
21	★ AR 50E - 7/12	7.5	12	70	90	110	130	150	160	182
22	AR 50 - 10/15	10	15	88	114	138	162	188	200	227
23	AR 50 - 10/16	10	16	93	120	147	173	200	213	240
24	AR 50 - 12/20	12.5	20	116	150	185	216	250	266	302

Discharge in LPM				210	180	150	120	90	60	Shut off in mtrs
S.No	Model	HP	Stages	Delivery Size 50 mm						
25	AR 50 - 5/10	5	10	43	67	97	119	128	139	150
26	AR 50 - 6/12	6	12	52	80	116	142	154	166	180
27	AR 50 - 7/15	7.5	15	65	100	145	178	193	207	225
28	AR 50 - 10/20	10	20	88	134	194	236	257	276	300



★ Star Rated ● ISI Marking

Note : Due to continuous improvements, specifications, marking and designs are subject to change without prior notice.



Discharge in LPM				500	450	390	350	290	220	Shut off in mtrs
S.No	Model	HP	Stages	Delivery Size 65 mm						
29	AR 50 - 5/4	5	4	25	35	40	45	50	55	60
30	AR 50 - 6/5	6	5	32	44	50	57	63	69	75
31	AR 50 - 7/6	7.5	6	38	53	60	68	75	83	90
32	AR 50 - 10/8	10	8	50	70	80	90	100	110	120
33	AR 50 - 12/10	12.5	10	63	88	100	113	125	138	150
34	AR 50 - 15/12	15	12	75	105	120	135	150	165	180
35	AR 50 - 17/14	17.5	14	88	123	140	158	175	193	210
36	AR 50 - 20/15	20	15	94	132	150	169	188	207	225
37	AR 50 - 20/16	20	16	100	141	160	180	201	221	240

Discharge in LPM				600	540	500	460	410	350	Shut off in mtrs
S.No	Model	HP	Stages	Delivery Size 65 mm						
38	AR 50 - 5/3	5	3	18	22	26	30	33	37	45
39	AR 50 - 6/4	6	4	24	30	35	40	45	50	60
40	AR 50 - 7/5	7.5	5	30	37	44	50	56	63	75
41	AR 50 - 10/6	10	6	36	45	53	60	68	75	90
42	AR 50 - 12/8	12.5	8	48	60	70	80	90	100	120
43	AR 50 - 15/10	15	10	60	75	88	100	113	125	150
44	AR 50 - 20/12	20	12	72	90	105	120	135	150	180
45	AR 50 - 20/13	20	13	78	98	114	130	146	163	195

Discharge in LPM				820	740	680	620	520	450	Shut off in mtrs
S.No	Model	HP	Stages	Delivery Size 65 mm						
46	AR 50 - 6/3	6	3	15	23	26	30	34	38	45
47	AR 50 - 7/4	7.5	4	20	30	35	40	45	50	60
48	AR 50 - 10/5	10	5	25	38	44	50	56	63	75
49	AR 50 - 12/6	12.5	6	30	45	53	60	68	75	90
50	AR 50 - 15/7	15	7	35	53	61	70	79	88	105
51	AR 50 - 15/8	15	8	40	60	70	80	90	100	120
52	AR 50 - 20/10	20	10	50	75	88	100	113	125	150

★ Star Rated ● ISI Marking

Note : Due to continuous improvements, specifications, marking and designs are subject to change without prior notice.

ARYENVARSHA Motor V5 (120mm) / V4 (98mm) with V4 (98Φ) Submersible Pumpsets.

3Φ, 400 Volt, AC, 50Hz, Wet Type, Submersible Pumpsets Suitable for 5" (128 mm) & above Borewell

Performance Values of HDJ / HH - (HIGH HEAD JACKET) MODELS.

S.No	Model	Motor	HP	Stages	Delivery Head in Metres.											Shut off in m		
					100	130	175	200	250	275	300	325	350	360	400		420	
1	HDJ/HH 5035	V4/V5	5	25	5200	4600	3900	3500	2400	1600								290
2	HDJ/HH 6042	V4/V5	5	35	5300	5100	4350	4050	3300	2800	2300	1700						348
3	HDJ/HH 6045	V5	6	30	5500	5200	4500	4200	3500	3100	2600	2000	1350	1080				375
4	HDJ/HH 7052	V5	6	42		5800	5300	4900	4350	4000	3650	3300	2700	2550	1700	1300		435
5	HDJ/HH 7054	V5	7.5	40			5400	5100	4500	4200	3800	3500	3000	2600	2000	1500		452



Performance Values of HDJ / HD - (HIGH DISCHARGE JACKET) MODELS.

S.No	Model	Motor	HP	Stages	Delivery Head in Metres. Delivery pipe 1 1/4" (32mm).											Shut off in m	Delivery Size in mm			
					80	100	120	140	160	180	200	220	240	260	280					
6	HDJ/HD 5025	V4/V5	5	25	9000	7900	6700	5200											162	50
7	HDJ/HD 5035	V5	5	35	8100	7400	6600	5900	4900	4000	3200								220	40
8	HDJ/HD 6030	V5	6	30		9000	7900	6800	5800	4500									195	50
9	HDJ/HD 6042	V5	6	42		8100	7200	6400	5600	4800	3900	2900	1200						252	40
10	HDJ/HD 7040	V5	7.5	40		9800	9500	8800	7900	7200	6300	5400	3200						260	50
11	HDJ/HD 7050	V5	7.5	50		7500	7200	6900	6200	5500	4900	4200	3600	2600	1100				293	50

V4 - HDJ Models only ★ Star Rated & ● ISI Marking

★ Star Rated ● ISI Marking

Note : Due to continuous improvements, specifications, marking and designs are subject to change without prior notice.

ARYENVARSHA - TS, TT Models

Performance Values of V4 Submersible Pumpsets, Suitable for 4.0" (100mm) Borewell.
(TS - 1Φ, 240 Volt) (TT - 3Φ, 400 Volt), AC Supply, 50 Hz, Wet Type, Cat-B, S1 Duty.

S.No	Model	HP	Stages	Delivery Head in Metres.											Shut Off in m.	Delivery Pipe in mm		
				20	30	40	50	60	75	90	100	110	120	130			140	
1	TS 0507	0.5	7	3000	2300	1000	400										52	32
2	TS 0710	0.75	10	4000	3300	2600	1900	1000									72	32
3	TS / TT 1007	1	7	5200	4600	3400	2050										55	32
4	★ TSE / TT 1009	1	9	5200	4400	3650	2700	1750									68	32
5	TS / TT 1510	1.5	10	5900	5250	4550	4000	3100	1100								80	32
6	● TS / TT 1012	1	12	3900	3300	2800	2350	1800	1000								88	32
7	●★ TSE / TT 1014	1	14	3700	3300	2900	2600	2200	1500	850	400						102	32
8	●★ TSE / TT 1514	1.5	14		5200	4900	4400	3900	3100	2100	1400						110	32
9	●★ TSE / TT 1518	1.5	18		3800	3300	3000	2700	2350	1900	1650	1300	1000	400			132	32
10	●★ TSE / TT 1521	1.5	21			3600	3300	3100	2900	2400	2200	1700	1550	1100	720		153	32
11	TS / TT 2010	2	10	10600	9300	7900	6400	3700									65	50
12	TS / TT 2015	2	15	9200	8500	7800	7000	6200	4700	1100							95	40
13	TS / ●★ TTE 2016	2	16		4900	4600	4300	4000	3000	2300	1700	1000					124	32
14	TS / ●★ TTE 2017	2	17			4700	4400	4100	3400	2700	2100	1600	900				132	32
15	●★ TSE / ●★ TTE 2018	2	18			4800	4500	4300	3700	2900	2400	1900	1200	720			140	32
16	TS / TT 2020	2	20					4500	4100	3200	2800	2400	1800	1200	600		154	32
17	TS / TT 3015	3	15	10800	10300	9200	8400	7400	5800	3600							95	50
18	TS / ●★ TTE 3020	3	20			8500	8000	7400	6200	5000	3800	2500	1000				126	40
19	TS / ●★ TTE 3021	3	21				8100	7500	6300	5300	4400	3300	2300	1500			132	40
20	TS / ●★ TTE 3022	3	22				8400	7700	6700	5800	4800	3800	2800	1800			139	40



★ Star Rated ● ISI Marking
Note : Due to continuous improvements, specifications, marking and designs are subject to change without prior notice.

TS - Single Phase. For TS & TT - 1 1/4" Standard.
TT - Three Phase. For TS & TT - 1 1/2" Optional.

ARYENVARSHA - TS, TT Models

Performance Values of V4 Submersible Pumpsets, Suitable for 4.0" (100mm) Borewell.
(TS - 1Φ, 240Volt) (TT - 3Φ, 400 Volt), AC Supply, 50 Hz, Wet Type, Cat-B, S1 Duty.

10



S.No	Model	HP	Stages	Delivery Head in Metres.											Shut Off in m	Delivery Pipe in mm		
				80	90	100	120	130	140	150	160	170	180	190			200	
19	● TS / TT 2025	2	25	2600	2400	2300	1800	1600	1400	1200	900	650					180	32
20	● TS / TT 2028	2	28		2650	2400	2000	1900	1600	1350	1200	1000	700	400			202	32
21	● ★ TSE / TT 2030	2	30		2700	2600	2300	2000	1800	1700	1500	1200	1000	800	400		219	32
22	● TS / ● TT 3025	3	25		4100	3800	3300	2900	2500	2200	1800	1000	800				190	32
23	● ★ TSE / ● ★ TTE 3030	3	30		4300	4000	3600	3300	3000	2800	2550	2200	1800	1400	1000		216	32

Discharge in LPH

★ Star Rated ● ISI Marking
Note : Due to continuous improvements, specifications, marking and designs are subject to change without prior notice.

TS - Single Phase. For TS & TT - 1/4" Standard.
TT - Three Phase. For TS & TT - 1/2" Optional.

ARYENVARSHA - Well Series Models

AWS Models - Suitable for Openwell

(AWS - 1 Φ , 240 Volt), AC Supply, 50 Hz, Wet Type, Cat-B, S1 Duty.

S.No	Model	HP	Stages	Delivery Head in Metres.																	Shut Off in m	Delivery Pipe in mm
				20	30	40	50	60	75	90	100	110	120	130	140							
1	AWS 1007	1	7	5200	4600	3400	2050													55	32	
2	AWS 1009	1	9	5200	4400	3650	2700	1750												68	32	
3	AWS 1012	1	12	3900	3300	2800	2350	1800	1000											88	32	
4	AWS 1014	1	14	3700	3300	2900	2600	2200	1500	850	400									102	32	
5	AWS 1510	1.5	10	5900	5250	4550	4000	3100	1100											80	32	
6	AWS 1514	1.5	14		5200	4900	4400	3900	3100	2100	1400									110	32	
7	AWS 1518	1.5	18		3800	3300	3000	2700	2350	1900	1650	1300	1000	400						132	32	
8	AWS 2010	2	10	10600	9300	7900	6400	3700												65	50	
9	AWS 2015	2	15	9200	8500	7800	7000	6200	4700	1100										95	40	
10	AWS 2016	2	16		4900	4600	4300	4000	3000	2300	1700	1000								124	32	
11	AWS 2017	2	17			4700	4400	4100	3400	2700	2100	1600	900							132	32	
12	AWS 2018	2	18			4800	4500	4300	3700	2900	2400	1900	1200	720						140	32	



★ Star Rated ● ISI Marking

Note : Due to continuous improvements, specifications, marking and designs are subject to change without prior notice.

ARYENVARSHA VERTICAL OPENWELL SUBMERSIBLE PUMPSETS.

AVW Models - Performance Chart , 60mm Delivery Size.

3 Phase, 380Volts, AC Supply, 50Hz, Wet Type, Cat-B, S1 Duty.

S.No	Model	HP	Stage	Shut off in m	Discharge in LPM					
					Head in Metres					
					360	480	600	720	840	960
1	AVW 2	3	1	24	21	19	16	11	6	
2	● AVW 4	5	2	38	34	30	25	19	12	
3	● AVW 6	5	2	35	31	29	25	21	14	10
4	● AVW 8	7.5	3	60	52	46	37	27	17	
5	● AVW 11	10	3	61	54	50	45	38	31	21
6	● AVW 14	10	4	78	67	58	49	36	23	



★ Star Rated ● ISI Marking

Note : Due to continuous improvements, specifications, marking and designs are subject to change without prior notice.

ARYENVARSHA HORIZONTAL OPENWELL SUBMERSIBLE PUMPSETS.

TURBO SERIES Models - Performance Chart

3 Phase, 380 & 400 Volts, AC Supply, 50Hz, Wet Type, Cat-B, S1 Duty.

S.No	Model	HP	Delivery Size in Inch	Shut off in m	Discharge in LPM												
					360	480	600	720	840	960	1080	1200	1320	1500			
1	TURBO - T 2	3	2½ x 2	26	21	18	14	11	8								
2	TURBO - T 12	3	3 x 2½	21	19	18	17	16	14	10							
3	★ TURBO - T 4	5	2½ x 2	33	31	28	27	19	15	10							
4	★ TURBO - T 6	5	3 x 2½	31	30	29	27	25	22	18	14						
5	TURBO - T 16	5	2½ x 2	37	33	30	28	18	12	8							
6	TURBO - T 37	5	4 x 3	21	20.7	20.3	19.5	19	18.5	18	17	16	15	10			
7	★ TURBO - T 8	7.5	2½ x 2	45	42	41	38	36	31	18	13						
8	★ TURBO - T 10	7.5	3 x 2½	39	37	36	35	33	31	29	26	22					
9	TURBO - T 13	7.5	4 x 3	30			27	26	25	24	23	22	21	19			
10	TURBO - T 35	7.5	2½ x 2	51	45	42	36	18	12								
11	★ TURBO - T 14	10	2½ x 2	55	52	50	48	46	44	40	24	20					
12	★ TURBO - T 11	10	3 x 2½	44	43	42	41	38	37	35	33	20	15				
13	TURBO - T 15	10	4 x 3	33				32	31	30	29	27	26	23			
14	TURBO - T 39	10	4 x 4	32				31	30	29	28	26	24	22			



★ Star Rated ● ISI Marking

Note : Due to continuous improvements, specifications, marking and designs are subject to change without prior notice.

ARYENVARSHA HORIZONTAL OPENWELL SUBMERSIBLE PUMPSETS.

A-SERIES Models - Performance Chart

3 Phase, 400 Volts, AC Supply, Wet Type, Cat-B, S1 Duty.

S.No	Model	HP	Delivery Size in Inch	Shut off in m	Discharge in LPM												
					240	360	480	600	720	840	960	1080	1200				
1	A2	3	2½ x 2	27	22	19	15	12	9								
2	A4	5	2 x 2½	35	32	29	26	22	10								
3	A6	5	3 x 2½	26			25	24	22	20	17	14	10				

Delivery Head
in Metres



A4



A6

★ Star Rated ● ISI Marking

Note : Due to continuous improvements, specifications, marking and designs are subject to change without prior notice.

ARYENVARSHA DOMESTIC MODELS

ARYENVARSHA REGENERATIVE SELF PRIMING PUMPS

1 - Phase, 240 Volts, 50Hz, AC Supply, Conn : CSR, TEFC, CI Body, Class 'B', S1 Duty.

S.No	Model	Motor KW/HP	Amps	Run - Cap	Pipe Size (mm)	Rated Head in (m)	Rated in (LPH)	Head Range in (m)	Discharge in (LPH)	Shut off in (m)
1	VSP 375	0.37/0.5	3	10 mfd, 440 V AC	25 x 25	16	1050	12 - 24	2000 - 900	34
2	VSP 425	0.37/0.5	3	10 mfd, 440 V AC	25 x 25	14	1200	6 - 18	1500 - 800	25
3	VSP 725	0.75/1.0	6.5	15 mfd, 440 V AC	25 x 25	30	1200	15 - 35	2800 - 1000	45



Model : VSP 375 - 0.5 HP



Model : VSP 425 - 0.5 HP



Model : VSP 725 - 1HP

ARYENVARSHA CENTRIFUGAL MONOBLOCK PUMPS

1 - Phase, 240 Volts, 50 Hz, AC Supply, Conn : CSR, CI Body, Class 'B', S1 Duty.

S.No	Model	Motor KW/HP	Amps	Run - Cap	Pipe Size (mm)	Rated Head in (m)	Rated in (LPS)	Head Range in (m)	Discharge in (LPH)	Shut off in (m)
1	ASM 425	0.37/0.5	3	10 mfd, 440 V AC	25 x 25	15	0.9	8 - 18	5000 - 2500	22
2	ASM 725	0.75/1.0	8.5	25 mfd, 440 V AC	25 x 25	22	1.2	16 - 26	6000 - 4000	28
3	DMA 2N	0.37/0.5	3	12.5 mfd, 440 V AC	25 x 25	20	0.42	17 - 21	1700 - 1350	31



Model : ASM 425 - 0.5 HP



Model : ASM 725 - 1 HP



Model : DMA 2N - 0.5 HP

ARYENVARSHA OPENWELL SUBMERSIBLE PUMPS

1 - Phase, 240 Volts, 50 Hz, AC Supply, Conn : CSR, Wet Type, Class 'B', S1 Duty.

S.No	Model	Motor KW/HP	Amps	Run - Cap	Pipe Size (mm)	Rated Head in (m)	Rated in (LPH)	Head Range in (m)	Discharge in (LPH)	Shut off in (m)
1	ASW 525	0.37/0.5	6	36 mfd, 440 V AC	25 x 25	18	3300	15 - 22	5000 - 2500	24
2	ASW 725	0.75/1.0	7.5	50 mfd, 440 V AC	25 x 25	25	4000	21 - 26	4900 - 3100	33



Model : ASW 525 - 0.5 HP



Model : ASW 725 - 1 HP

CABLE SELECTION CHART

SUBMERSIBLE PUMPSET CABLE SELECTION CHART FOR
415 Volts - THREE PHASE - 50 Hz

HP	LENGTH IN METRES																					
	10	20	30	40	50	60	70	80	90	100	120	140	160	180	200	250	300	350	400	450	500	
3	1.5	1.5	1.5	1.5	1.5	1.5	1.5	1.5	1.5	1.5	1.5	2.5	2.5	2.5	2.5	4	4	4	6	6	6	
4	1.5	1.5	1.5	1.5	1.5	1.5	1.5	1.5	1.5	1.5	2.5	2.5	2.5	4	4	4	6	6	6	10	10	10
5	1.5	1.5	1.5	1.5	1.5	1.5	1.5	2.5	2.5	2.5	2.5	2.5	4	4	4	6	6	10	10	10	10	10
6	1.5	1.5	1.5	1.5	1.5	1.5	2.5	2.5	2.5	2.5	4	4	4	4	6	6	10	10	10	10	10	16
7.5S	2.5	2.5	2.5	2.5	2.5	2.5	2.5	4	4	4	4	4	4	6	6	10	10	10	16	16	16	16
7.5D	1.5	1.5	1.5	1.5	1.5	1.5	1.5	1.5	1.5	1.5	2.5	2.5	2.5	4	4	4	6	6	10	10	10	10
10	1.5	1.5	1.5	1.5	1.5	1.5	2.5	2.5	2.5	2.5	4	4	4	4	6	6	10	10	10	10	10	16
12.5	2.5	2.5	2.5	2.5	2.5	2.5	2.5	2.5	4	4	4	4	4	6	6	10	10	10	16	16	16	16
15	2.5	2.5	2.5	2.5	2.5	2.5	2.5	2.5	4	4	4	6	6	6	10	10	10	16	16	16	16	16
17.5	4	4	4	4	4	4	4	4	4	4	6	6	6	10	10	10	16	16	16	16	16	16
20	4	4	4	4	4	4	4	4	4	6	6	10	10	10	10	16	16	16	25	25	25	25
25	4	4	4	4	4	4	4	4	4	6	6	10	10	10	16	16	16	25	25	25	25	35
30	6	6	6	6	6	6	6	6	6	6	10	10	10	10	16	16	25	25	25	25	35	35
40	10	10	10	10	10	10	10	10	10	10	10	16	16	16	25	25	35	35	35	50	50	50
50	16	16	16	16	16	16	16	16	16	16	16	16	16	25	25	35	50	50	50	50	50	70

SUBMERSIBLE PUMPSET CABLE SELECTION CHART FOR 220 Volts - SINGLE PHASE - 50 Hz

0.5	1.5	1.5	1.5	1.5	1.5	1.5	1.5	1.5	1.5	1.5	2.5	2.5	2.5	4	4	4	6	6	10	10	10	10
1	1.5	1.5	1.5	1.5	1.5	1.5	1.5	1.5	1.5	1.5	2.5	4	4	6	6	10	10	10	16	16	16	16
1.5	1.5	1.5	1.5	2.5	2.5	2.5	4	4	6	6	10	10	10	10	16	16	16	25	25	25	25	25
2	1.5	1.5	2.5	2.5	4	4	4	6	6	10	10	10	10	16	16	16	25	25	25	25	35	35
3	1.5	1.5	2.5	2.5	4	4	6	6	6	10	10	10	16	16	16	25	25	25	25	35	35	35
4	1.5	2.5	2.5	4	4	6	6	10	10	10	10	16	16	16	25	25	25	25	35	35	35	35
5	2.5	2.5	4	4	6	6	10	10	10	10	16	16	16	25	25	35	35	35	50	50	50	50

Note : 1. HP 7.5D and above are STAR/DELTA motors.
2. For STAR DELTA Starting reduce current by 1/3 for selecting suitable cable.
Conversion Table :
1 m = 3.28ft.
1 ft = 0.305 m

SINGLE PHASE :
For other voltages the cable size is to be selected as follows :-
Calculated length = (220 * Volt) x actual length
Example : For a 3 HP 460 volts motor and 100 metres actual cable length,
Calculated Length = (220 - 460) x 100 = 48m. The size of the cable to be selected for 48m from the chart is 4mm

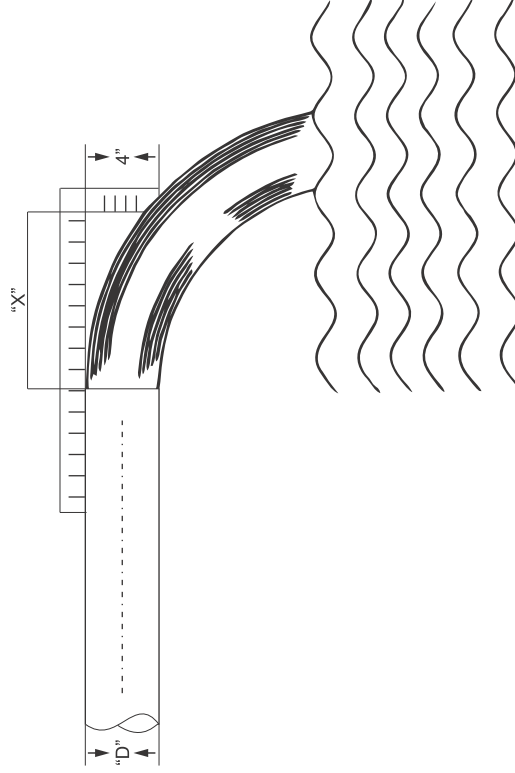
THREE PHASE :
For other Voltages the cable size is to be selected as follows :-
Calculated length = (415 * Volt) x actual length.
Example : For a 20 HP Motor at 350 volts and 90 metres actual cable length, calculated length = (415 + 350) x 90= 107m. The size of the cable to be selected for 107m from the chart is 6mm”.



DISCHARGE OUTPUT CHART

DISCHARGE RATE (LITRES PER SECOND)

HORIZONTAL DISTANCE "X" IN INCHES	NOMINAL PIPE DIAMETRE "D"									
	1"	1½"	2"	2½"	3"	4"	5"	6"		
4	0.4	0.7	1.0	1.7	2.3	3.7	6.3	9.8	14.4	
5	0.5	0.9	1.3	2.1	3.0	4.6	7.9	12.5	18.2	
6	0.6	1.1	1.5	2.5	3.6	5.5	9.5	14.8	21.6	
7	0.8	1.3	1.8	3.0	4.2	6.4	11.0	17.4	25.3	
8	0.9	1.5	2.0	3.3	4.7	7.4	12.6	19.7	28.8	
9	1.0	1.7	2.3	3.8	5.3	8.3	14.1	22.3	32.5	
10	1.1	1.9	2.5	4.2	5.9	9.2	15.7	24.6	35.9	
11	1.2	2.0	2.8	4.6	6.5	10.1	17.3	27.2	39.7	
12	1.3	2.2	3.0	5.0	7.1	11.1	18.9	29.5	43.1	
13	1.4	2.4	3.3	5.4	7.6	12.0	20.4	32.2	46.9	
14	1.5	2.6	3.5	5.8	8.2	12.9	22.0	34.1	50.3	
15	1.6	2.7	3.8	6.3	8.9	13.8	23.6	37.1	53.7	
16	1.7	3.0	4.0	6.7	9.5	14.8	25.2	39.3	57.5	
17	1.8	3.1	4.3	7.1	10.1	15.7	26.7	42.0	61.3	
18	1.9	3.3	4.5	7.5	10.6	16.6	28.3	44.6	64.7	
19	2.0	3.5	4.8	7.9	11.2	17.6	29.9	46.9	68.5	
20	2.1	3.7	5.0	8.4	11.8	18.5	31.5	49.2	71.9	
21	2.3	3.9	5.3	8.8	12.4	19.4	33.1	51.8	75.7	
22	2.4	4.0	5.5	9.2	13.0	20.4	34.6	54.5	79.5	
23	2.5	4.2	5.8	9.6	13.5	21.3	36.2	56.8	82.9	
24	2.6	4.4	6.0	10.1	14.1	22.2	37.8	59.0	86.3	
25	2.7	4.6	6.3	10.4	14.8	23.2	39.8	61.7	90.0	
26	2.8	4.8	6.5	10.9	15.4	24.1	40.9	63.9	93.4	
27	2.9	5.0	6.8	11.3	16.0	25.0	42.4	66.6	97.2	
28	3.0	5.1	7.0	11.7	16.5	25.9	44.0			
29	3.1	5.3	7.3	12.1	17.1	26.8	45.6			
30	3.2	5.5	7.5	12.6	17.7	27.8	47.2			
31			7.8	12.9	18.3	28.7				
32			8.0	13.4	18.9	29.6				
33			8.2	13.8	19.4	30.5				
34			8.6	14.2	20.1	31.4				
35			8.8	14.7	20.7	32.4				
36			9.0	15.1	21.3	33.3				



EXAMPLE:

HORIZONTAL DISTANCE "X" = 20"
 NOMINAL PIPE DIAMETRE "D" = 2"
 DISCHARGE Q = 8.4 LPS (LITRES PER SECOND)



CHART - 1A : FRICTION HEAD LOSS FOR GI PIPES

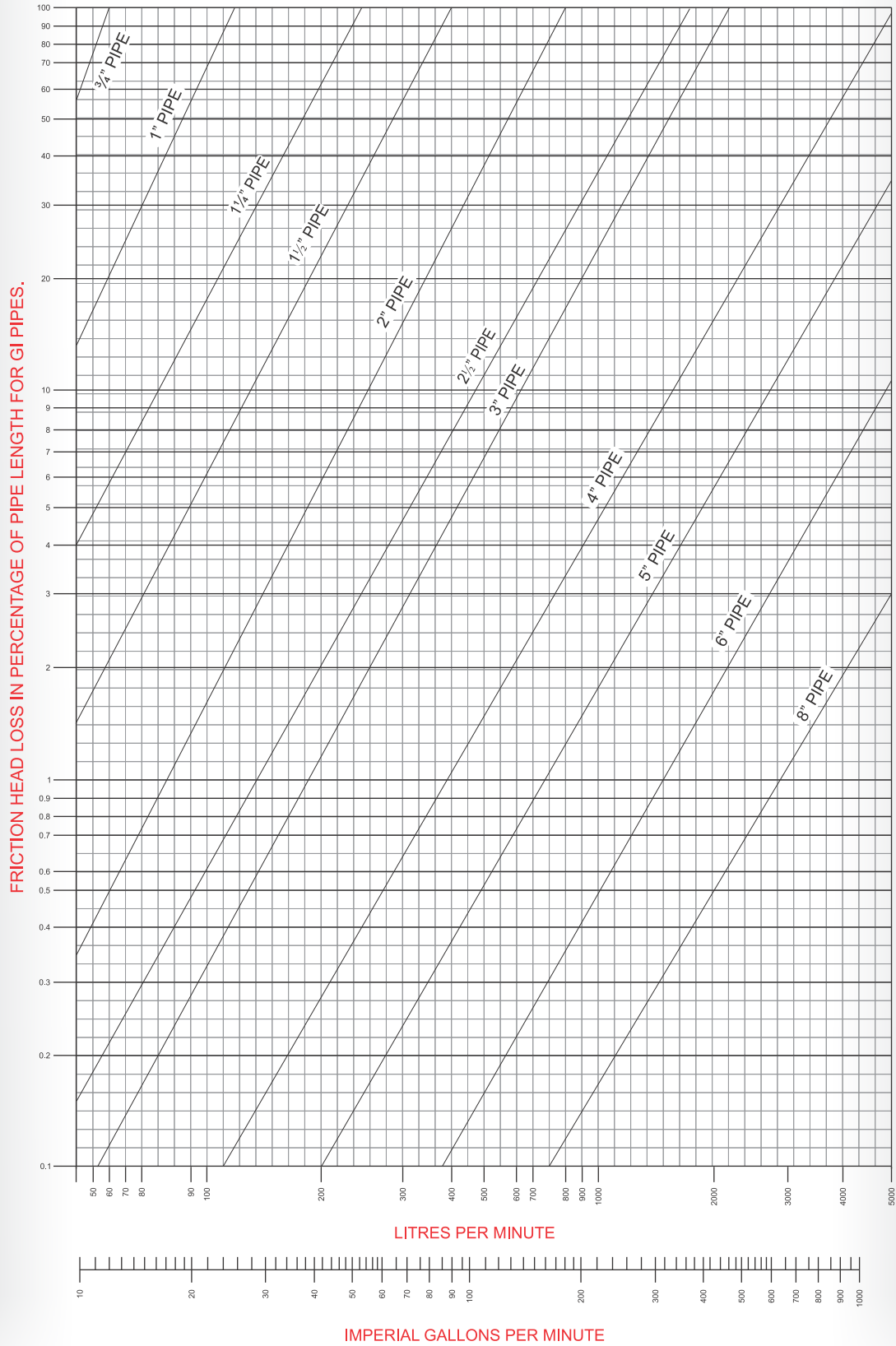
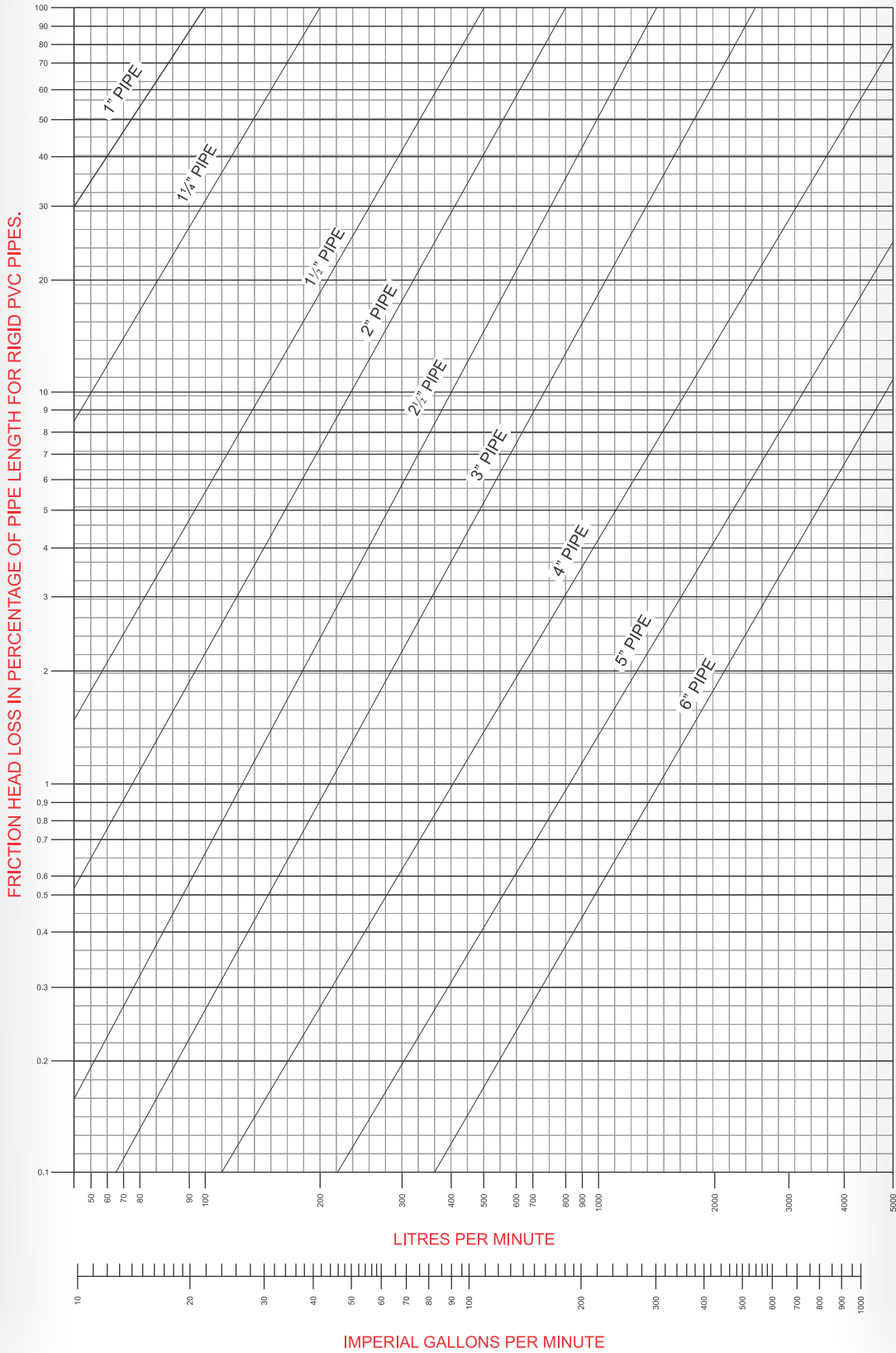


CHART - 1B : FRICTION HEAD LOSS FOR RIGID PVC PIPES



**LENGTH OF STRAIGHT PIPE IN METRES GIVING EQUIVALENT HEAD LOSS
IN PIPE FITTINGS, VALVES, Etc.**

SIZE OF PIPE IN mm	STANDARD ELBOW	MEDIUM ELBOW	LONG RADIUS ELBOW	45° ELBOW	TEE	SLUICE VALVE FULL OPEN	GLOBE VALVE FULL OPEN	ANGLE VALVE OPEN	FOOT VALVE OR REFLUX VALVE
25	0.82	0.70	0.52	0.40	1.77	0.18	8.24	4.57	2.04
40	1.31	1.10	0.85	0.61	2.74	0.29	13.4	6.71	3.05
50	1.67	1.40	1.07	0.76	3.35	0.37	17.4	8.54	3.96
65	1.98	1.65	1.28	0.92	4.26	0.42	20.1	10.0	5.18
80	2.47	2.00	1.55	1.15	5.18	0.52	25.9	12.8	6.10
100	3.35	2.77	2.13	1.53	6.71	0.70	33.5	17.7	8.23
125	4.26	3.66	2.78	1.86	8.24	0.88	42.6	21.2	10.0
150	4.87	4.26	3.35	2.35	10.0	1.07	48.7	25.3	12.2
200	6.40	5.48	4.26	3.05	13.1	1.37	67.1	33.5	16.2
250	7.62	6.71	5.18	3.86	17.1	1.74	88.5	42.6	20.4
300	9.75	7.92	6.10	4.57	20.1	2.04	100.5	51.8	24.4



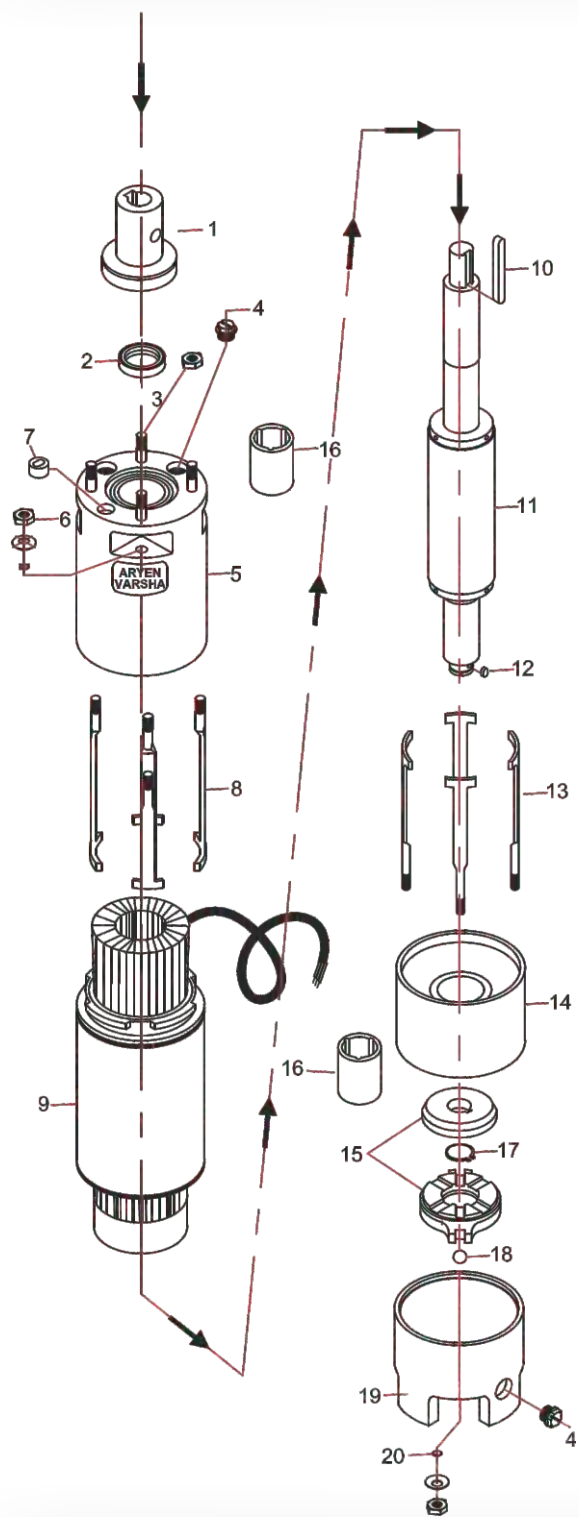
Single Phase Control Panel, 240 Volts \pm 10%, 50 Hz \pm 5%, AC Power Supply

Kw	HP	CAPACITOR (MFD)		Relay Range (A)	Rated Current (A)	MCB Rating (A)
		Sc	Rc			
0.37	0.5	80 - 100	30	4.5 - 6.5	4.5	6
0.55	0.75	80 - 100	36	6 - 10	5.4	10
0.75	1.0	100 - 120	40	6 - 10	7	16
1.1	1.5	100 - 120	60	9 - 14	9.5	16
1.5	2.0	200 - 250	80	13 - 19	12	25
2.2	3.0	200 - 250	90	18 - 25	18	32

PVC Insulated, 3 Core Submersible Flat Cables

Cable Size (SQ.MM)	No. of Strands	Insulation Thickness (mm)	Sheath Thickness (mm)	Over all Dimension (mm)		Resistance @ 20° C (OHMS/KM)	Cur. Car. Capacity (A)
				Width	Height		
SUBMERSIBLE CABLES							
1.5	22	0.6	0.9	11.0	5.0	12.1	14
2.5	36	0.7	1.0	13.0	6.0	7.41	18
4.0	56	0.8	1.0	15.3	6.7	4.95	26
6.0	84	1.0	1.15	18.7	7.9	3.3	31

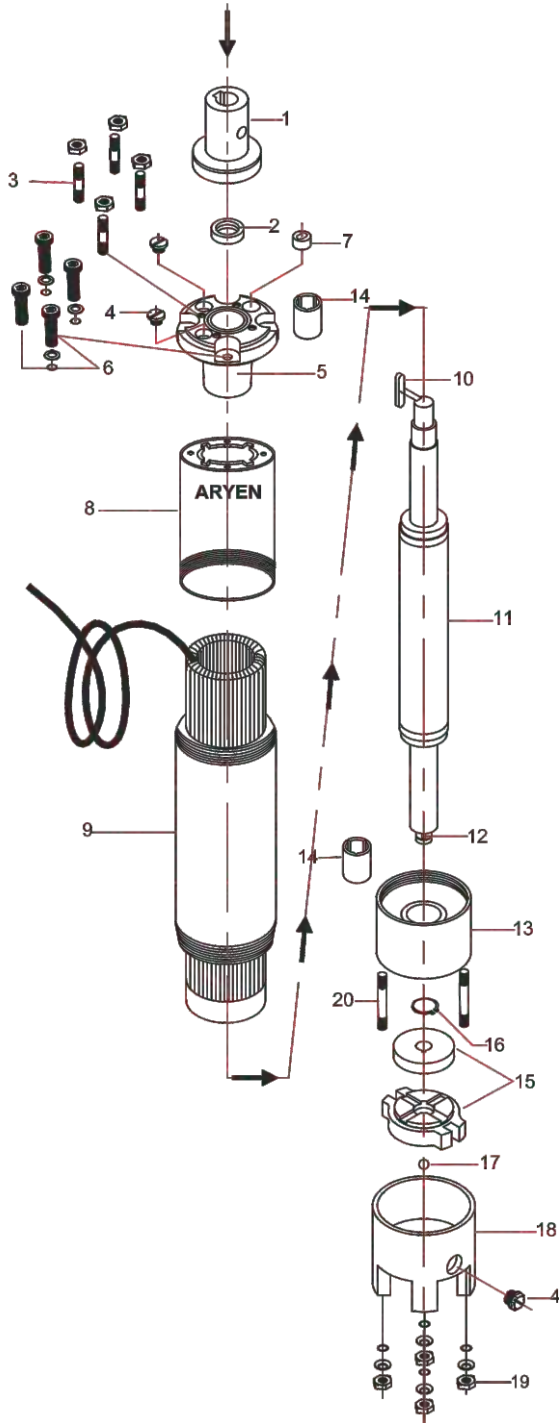




SPARE PARTS LIST FOR 6" MOTOR

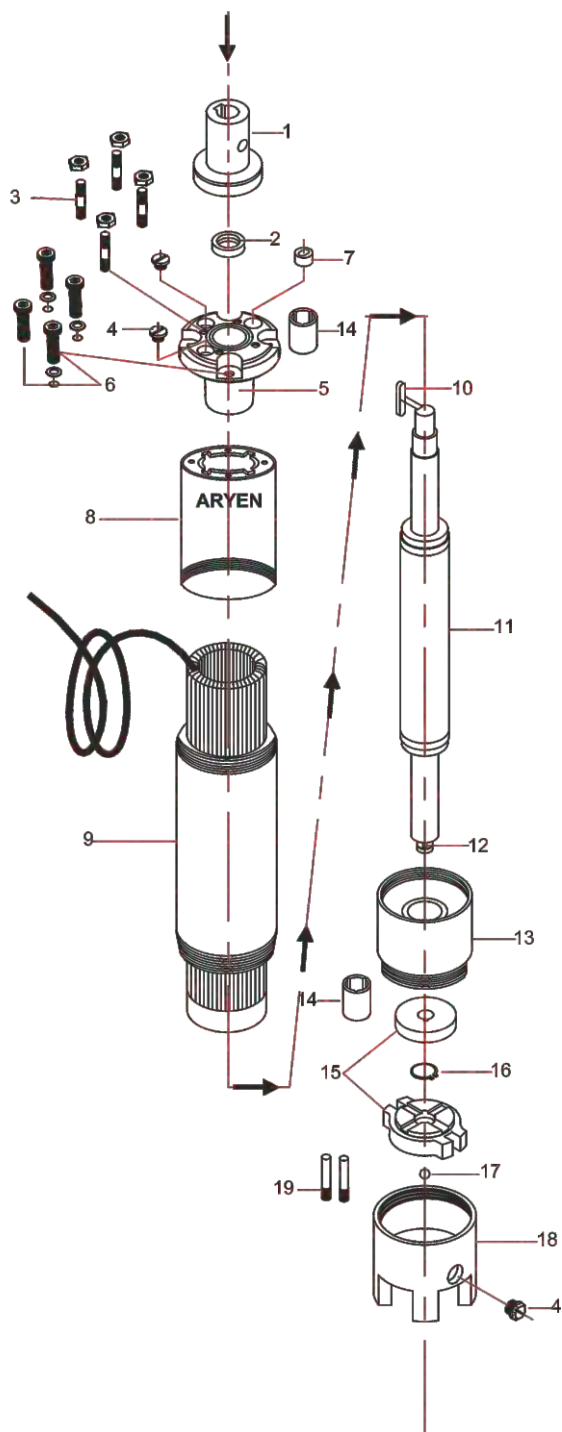
Sl.No.	Part Description	Qty
1	Coupling With Sand Guard.	1
2	Oil Seal.	1
3	Stud With Nut (M10).	4
4	Drain Plug Nut With 'O' Ring.	3
5	Top Housing.	1
6	Plain Washer & 'O' Ring & Nut (M10).	4
7	Cromet Rubber.	1
8	Motor 'T' Bolt top (165mm).	4
9	Motor Body With Winding.	1
10	Coupling Key.	1
11	Rotor Shaft Assembly.	1
12	Thrust Bearing Key.	1
13	Motor 'T' Bolt Bottom (183 or 193mm).	4
14	Bottom Housing.	1
15	Thrust Bearing Set.	1
16	Top & Bottom Housing LTB Bush.	2
17	Bearing Circlip.	1
18	Steel Ball.	1
19	Motor Leg.	1
20	Bend Washer & 'O' Ring & Nut(M10).	4

4" BOREWELL SUBMERSIBLE MOTOR DETAILS - TS / TT



SPARE PARTS LIST FOR 4" MOTOR - TS / TT

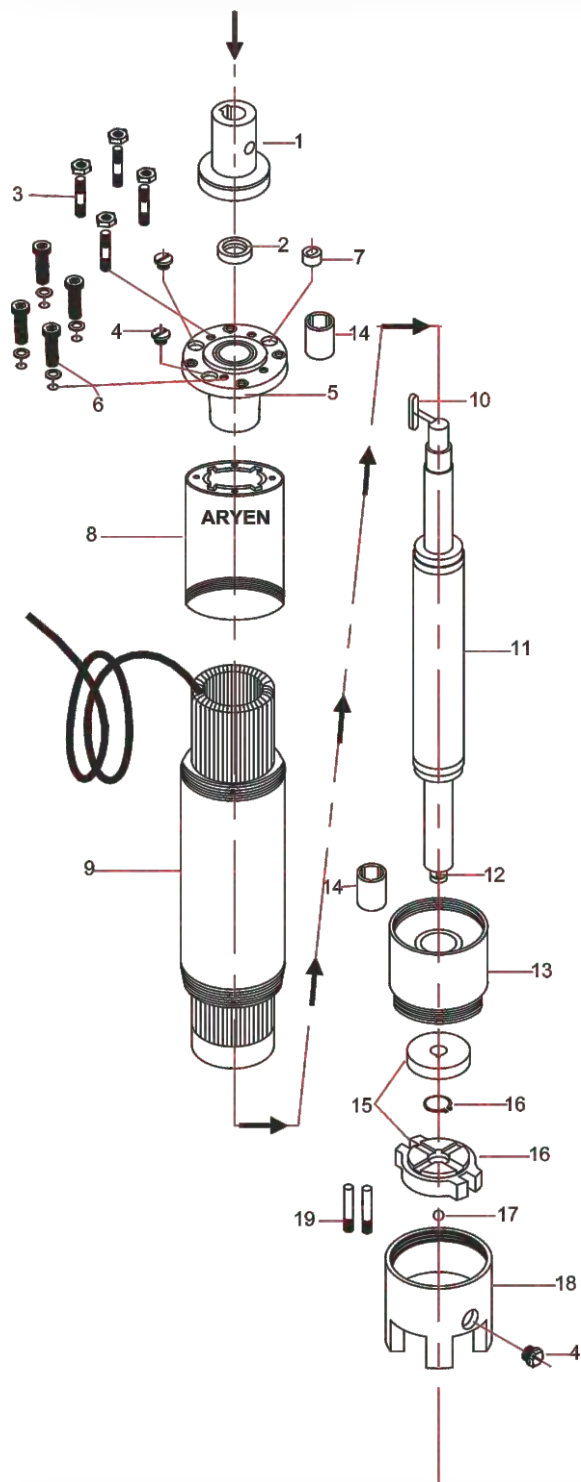
Sl.No.	Part Description	Qty
1	Coupling With Sand Guard.	1
2	Oil Seal.	1
3	Top Stud With Nut (M8).	4
4	Drain Plug Nut With 'O' Ring.	3
5	Top Housing.	1
6	Allen Bolt (M8) With Plain Washer & 'O' Ring.	4
7	Cromet Rubber.	1
8	Top Housing Pipe.	1
9	Motor Body With Winding.	1
10	Coupling Key.	1
11	Rotor Shaft Assembly.	1
12	Thrust Bearing Key.	1
13	Bottom Housing.	1
14	Top & Bottom Housing LTB Bush.	4
15	Thrust Bearing Set.	1
16	Bearing Circlip.	1
17	Steel Ball.	1
18	Motor Leg.	1
19	Bend Washer & 'O' Ring & Nut (M8).	4
20	Bottom Stud (M8).	4



SPARE PARTS LIST FOR 4" MOTOR - HD

Sl.No.	Part Description	Qty
1	Coupling With Sand Guard.	1
2	Oil Seal.	1
3	Top Stud With Nut (M8).	4
4	Drain Plug Nut With 'O' Ring.	3
5	Top Housing.	1
6	Allen Bolt (M8) With Plain Washer & 'O' Ring.	4
7	Cromet Rubber.	1
8	Top Housing Pipe.	1
9	Motor Body With Winding.	1
10	Coupling Key.	1
11	Rotor Shaft Assembly.	1
12	Thrust Bearing Key.	1
13	Bottom Housing (Threaded Type).	1
14	Top & Bottom Housing LTB Bush.	4
15	Thrust Bearing Set.	1
16	Bearing Circlip.	1
17	Steel Ball.	1
18	Motor Leg (Threaded Type).	1
19	Bearing Lock Stud (M8).	2

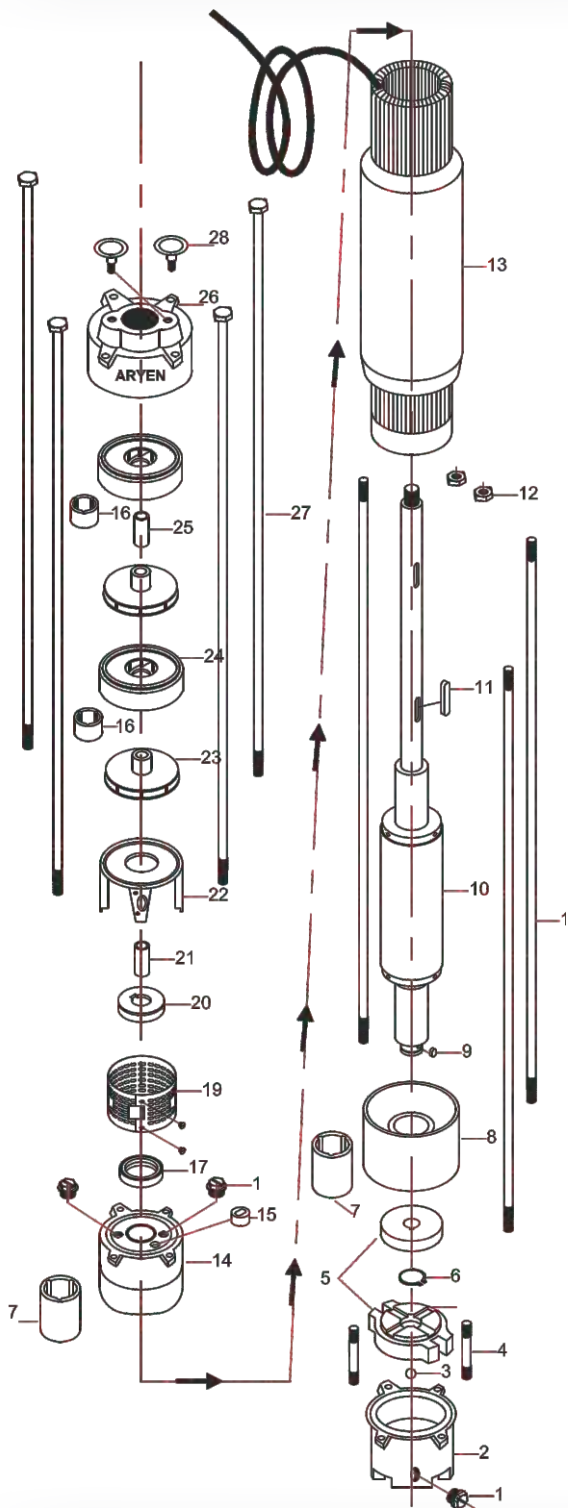
5" BOREWELL SUBMERSIBLE MOTOR DETAILS



SPARE PARTS LIST FOR 5" MOTOR

SI.No.	Part Description	Qty
1	Coupling With Sand Guard.	1
2	Oil Seal.	1
3	Top Stud With Nut (M8).	4
4	Drain Plug Nut With 'O' Ring.	3
5	Top Housing.	1
6	Allen Bolt (M8) with Plain Washer & 'O' Ring.	4
7	Cromet Rubber.	1
8	Top Housing Pipe.	1
9	Motor Body with Winding.	1
10	Coupling Key.	1
11	Rotor Shaft Assembly.	1
12	Thrust Bearing Key.	1
13	Bottom Housing (Threaded Type).	1
14	Top & Bottom Housing LTB Bush.	4
15	Thrust Bearing Set.	1
16	Bearing Circlip.	1
17	Steel Ball.	1
18	Motor Leg (Threaded Type).	1
19	Bearing Lock Stud (M10).	2

SPARE PARTS LIST FOR VERTICAL OPENWELL SUBMERSIBLE PUMPSET

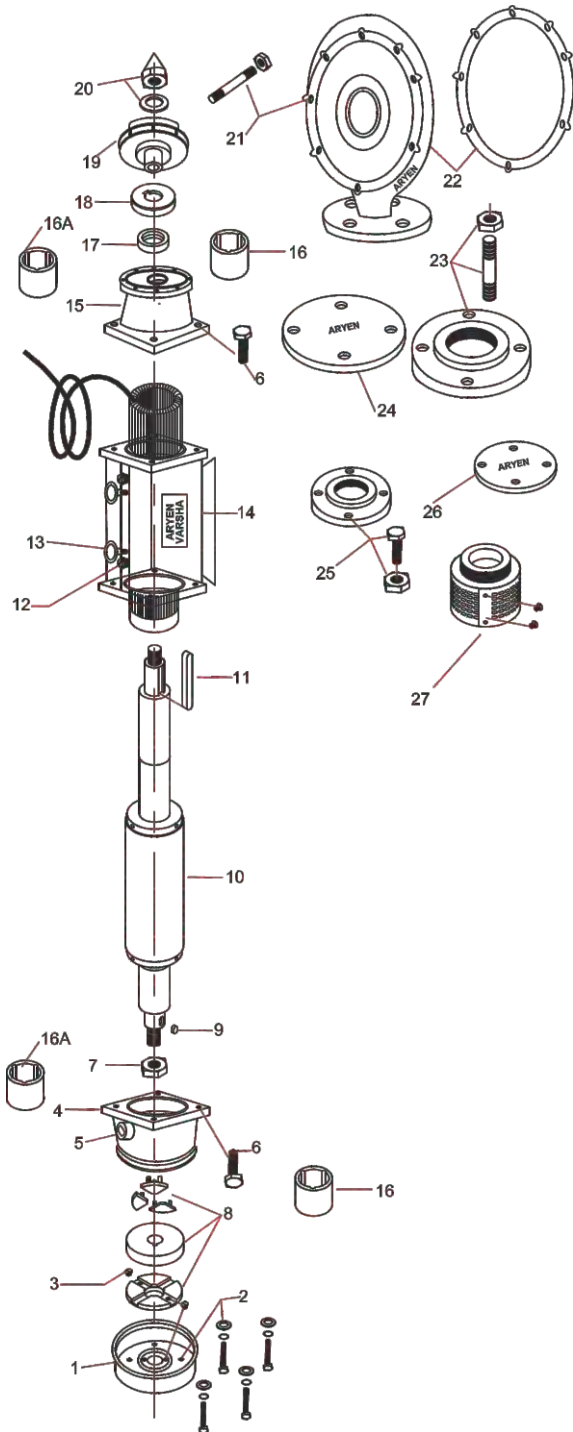


Sl.No.	Part Description	Qty
1	Drain Plug Nut With 'O' Ring.	3
2	Leg.	1
3	Steel Ball.	1
4	Bearing Lock Stud (M10).	2
5	Thrust Bearing Set.	1
6	Bearing Circlip.	1
7	Top & Bottom Housing LTB Bush.	2
8	Bottom Housing.	1
9	Thrust Bearing Key.	1
10	Rotor Shaft Assembly.	1
11	Stage Key.	1
12	Lock Nut.	2
13	Motor Body Assembly.	1
14	Top Housing.	1
15	Cromet Rubber.	1
16	Casing Bush.	2
17	Oil Seal.	1
18	Motor Tie Rod.	4
19	Strainer With CSK Screw.	1
20	Sand Guard.	1
21	Sleeve.	2
22	Inlet Bocket.	1
23	Impeller.	2
24	Diffuser Casing.	2
25	Top Sleeve.	1
26	Delivery Casing with Bush (2½" Delivery).	1
27	Pump Tie Rod.	4
28	Eye Bolt.	2



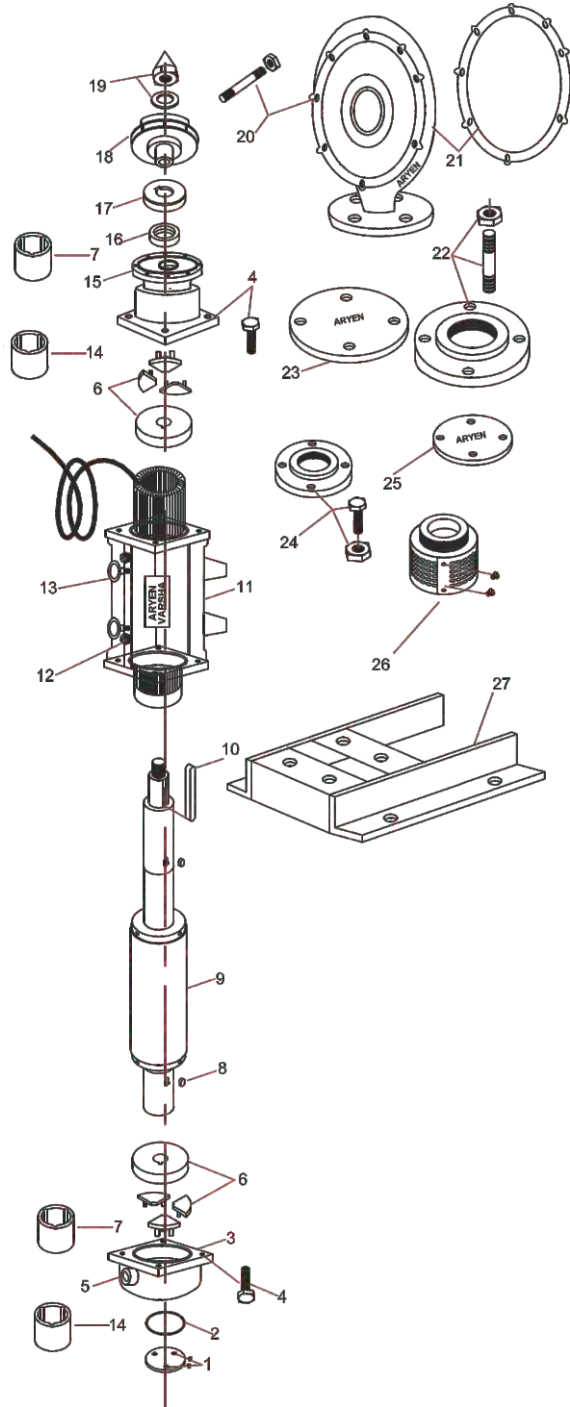
HORIZONTAL OPENWELL SUBMERSIBLE PUMPSET DETAILS (AHW Series)

SPARE PARTS LIST FOR HORIZONTAL OPENWELL SUBMERSIBLE PUMPSET (AHW Series)



Sl.No.	Part Description	Qty
1	Bearing Cover.	1
2	Bearing Cover Hex Bolt with 'O' Ring & Washer.	4
3	Bearing Lock CSK Screw.	2
4	Back Cover.	1
5	Cromet Rubber.	1
6	Hex Bolt (M10).	8
7	Bearing Lock Nut.	1
8	Thrust Bearing Pad & Segment.	1
9	Thrust Bearing Key.	1
10	Rotor Shaft Assembly.	1
11	Impeller Key.	1
12	Drain Plug Nut With 'O' Ring.	3
13	Eye Bolt.	2
14	Motor Body Assembly.	1
15	Front Cover.	1
16	Front & Back Cover LTB Bush.	2
16A	Front & Back Cover Carbon Bush.	2
17	Oil Seal.	1
18	Sand Guard.	1
19	Impeller.	1
20	Impeller Lock Nut & Washer.	1
21	Doom Stud (3/8") With Nut.	8
22	Doom With Rubber Washer.	1
23	Suction Flange with 5/8" Stud & Nut (2½" x 3" x 4").	1 - 4
24	Suction Flange Rubber Washer.	1
25	Delivery Flange With 1/2" Bolt & Nut (2 x 2½" x 3").	1 - 4
26	Delivery Flange Rubber Washer.	1
27	Delivery Filter With Strainer.	1

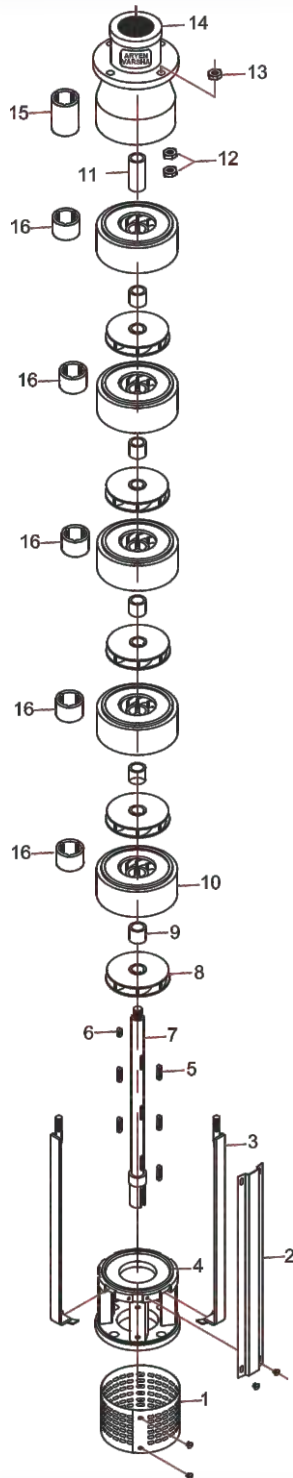




SPARE PARTS LIST FOR HORIZONTAL OPENWELL SUBMERSIBLE PUMPSET (TURBO Series)

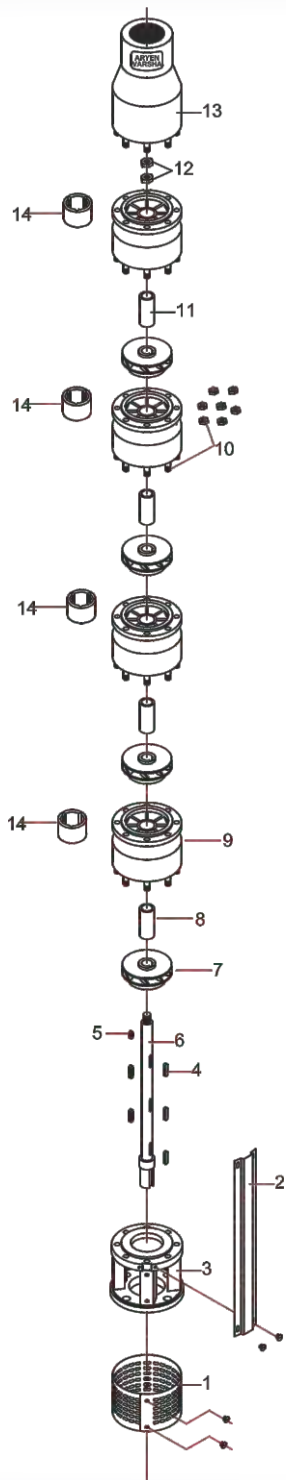
Sl.No.	Part Description	Qty
1	Back Cover Cap.	1
2	Back Cover 'O' Ring.	1
3	Back Cover.	1
4	Hex Bolt (M10).	8
5	Cromet Rubber.	1
6	Thrust Bearing Pad & Segment.	2
7	Front & Back Cover LTB Bush.	2
8	Thrust Bearing Key.	2
9	Rotor Shaft Assembly.	1
10	Impeller Key.	1
11	Motor Body Assembly.	1
12	Drain Plug Nut With 'O' Ring.	3
13	Eye Bolt.	2
14	Front & Back Cover Carbon Bush.	2
15	Front Cover.	1
16	Oil Seal.	1
17	Sand Guard.	1
18	Impeller.	1
19	Impeller Lock Nut & Washer.	1
20	Doom Stud (3/8") With Nut.	8
21	Doom With Rubber Washer.	1
22	Suction Flange With 5/8" Stud & Nut (2½" x 3" x 4").	1 - 4
23	Suction Flange Rubber Washer.	1
24	Delivery Flange With 1/2" Bolt & Nut (2 x 2½" x 3").	1 - 4
25	Delivery Flange Rubber Washer.	1
26	Delivery Filter With Strainer.	1
27	Motor Stand.	1

6" RADIAL FLOW PUMP DETAILS



SPARE PARTS LIST FOR 6" RADIAL FLOW PUMP

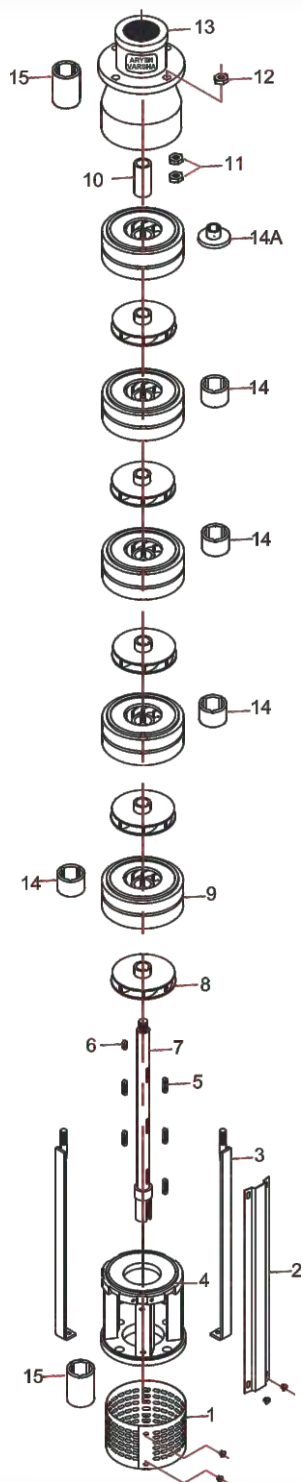
Sl.No.	Part Description	Qty
1	Strainer With CSK Screw.	1
2	Cable Guard With CSK Screw.	1
3	Pump 'T' Bolt.	4
4	Inlet Bracket.	1
5	Stage Key.	Stages
6	D.O.L Key.	1
7	Pump Shaft.	1
8	Impeller.	Stages
9	Sleeve.	Stages
10	Diffuser Casing (40 / 45 / 50mm).	Stages
11	D.O.L Sleeve.	1
12	Shaft Lock Nut.	2
13	T Bolt Nut (M10).	4
14	Non Return Valve (2 or 2½" Delivery).	1
15	NRV GM Bush.	1
16	Casing LTB Bush / Rubber Bush.	Stages



SPARE PARTS LIST FOR 6" MIXED FLOW PUMP

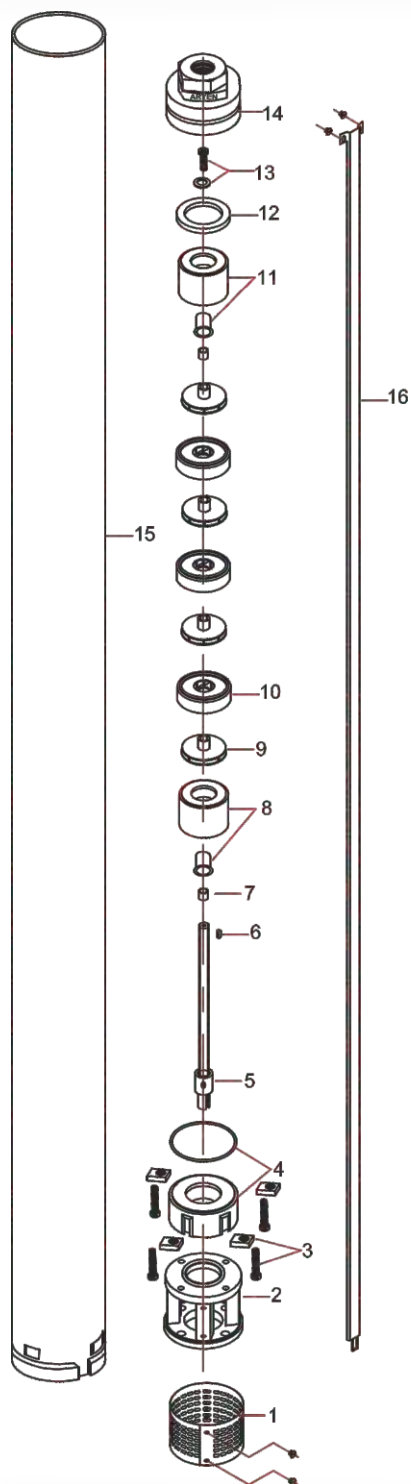
SI.No.	Part Description	Qty
1	Strainer With CSK Screw.	1
2	Cable Guard With CSK Screw.	1
3	Inlet Bracket.	1
4	Stage Key.	Stages
5	D.O.L Key.	1
6	Pump Shaft.	1
7	Impeller.	Stages
8	Sleeve.	Stages
9	Bowl Bush (262 & 302 & 323).	Stages
10	Stud With Nut (M8 & M6).	8 - 12
11	D.O.L Sleeve.	1
12	Lock Nut.	2
13	Non Return Valve (2½" or 3" Delivery).	1
14	Bowl Rubber Bush / LTB Bush.	Stages

6" AR-50 STAINLESS STEEL PUMP DETAILS



SPARE PARTS LIST FOR 6" AR-50 STAINLESS STEEL PUMP

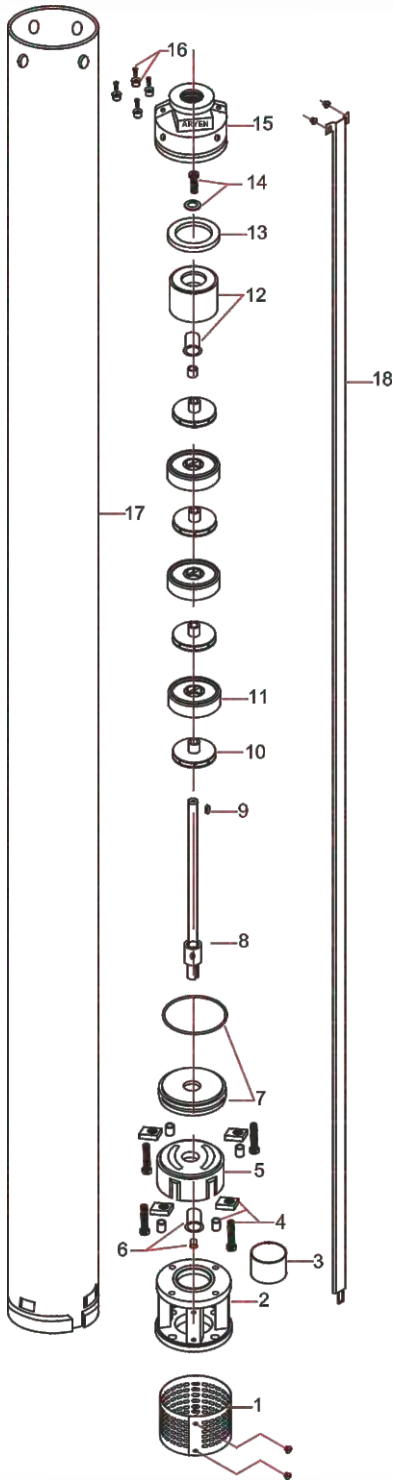
Sl.No.	Part Description	Qty
1	Strainer With CSK Screw.	1
2	Cable Guard With CSK Screw.	1
3	Pump Bolt.	4
4	Inlet Bracket.	1
5	Stage Key.	Stages
6	D.O.L Key.	1
7	Pump Shaft.	1
8	Impeller.	Stages
9	Diffuser Casing.	Stages
10	D.O.L Sleeve.	1
11	Lock Nut.	2
12	M10 Nut.	4
13	Non Return Valve (2 or 2½" Delivery).	1
14	Casing GM Bush.	Stages
14A	Top Diffuser With Thrust Arrest Pad.	1
15	NRV & I.B GM Bush.	2



SPARE PARTS LIST FOR 4" (TS / TT) PUMP

Sl.No.	Part Description	Qty
1	Strainer With CSK Screw.	1
2	Inlet Bracket.	1
3	Allen Head Bolt (M8) & Lock Nut.	4
4	Lock Plate With 'O' Ring.	1
5	Pump Shaft.	1
6	D.O.L Key.	Stages
7	Bottom D.O.L Sleeve.	1
8	Bottom D.O.L With Rubber Bush.	1
9	Impeller.	Stages
10	Diffuser Casing.	Stages
11	Top D.O.L With Rubber Bush.	1
12	NRV Rubber Washer.	1
13	Shaft Top Bolt (M6) & Plain Washer.	1
14	Non Return Valve (1¼" or 1½" or 2).	1
15	Pump Jacket.	1
16	Cable Guard With CSK Screw.	1

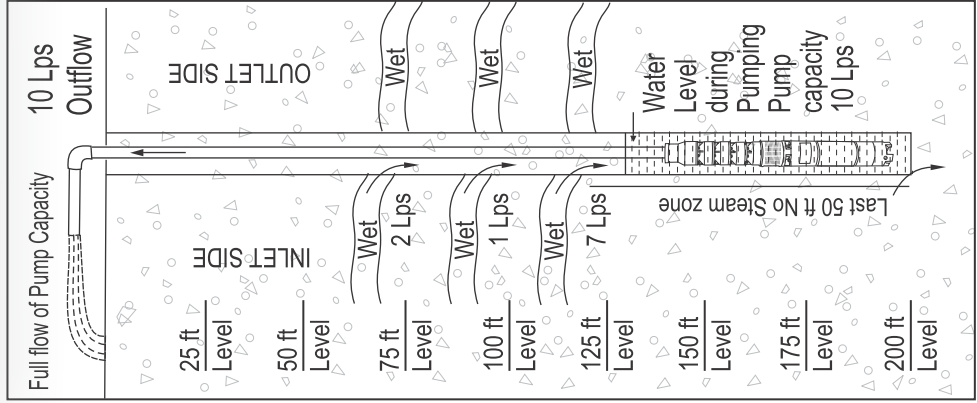
4" PUMP DETAILS - (HDJ)



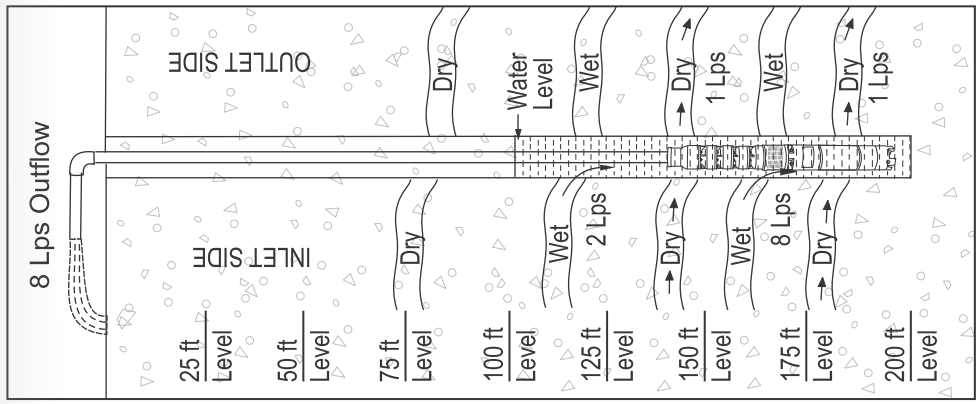
SPARE PARTS LIST FOR 4" (HDJ) PUMP

Sl.No.	Part Description	Qty
1	Strainer With CSK Screw.	1
2	Inlet Brocket.	1
3	Nut Holder Ring.	1
4	Allen Head Bolt (M8) With Lock Nut & Lock Bush.	4
5	Nut Holder.	1
6	Nut Holder GM Bush & Sleeve.	1
7	Seal Ring With 'O' Ring.	1
8	Pump Shaft.	1
9	D.O.L Key.	Stages
10	Impeller.	Stages
11	Diffuser Casing.	Stages
12	Top D.O.L With Rubber Bush.	1
13	NRV Rubber Washer.	1
14	Shaft Top Bolt (M6) & Plain Washer.	1
15	Non Return Valve (1 ¼ or 1 ½ or 2).	1
16	NRV Button With CSK Screw.	Stages
17	Pump Jacket.	1
18	Cable Guard With CSK Screw.	1

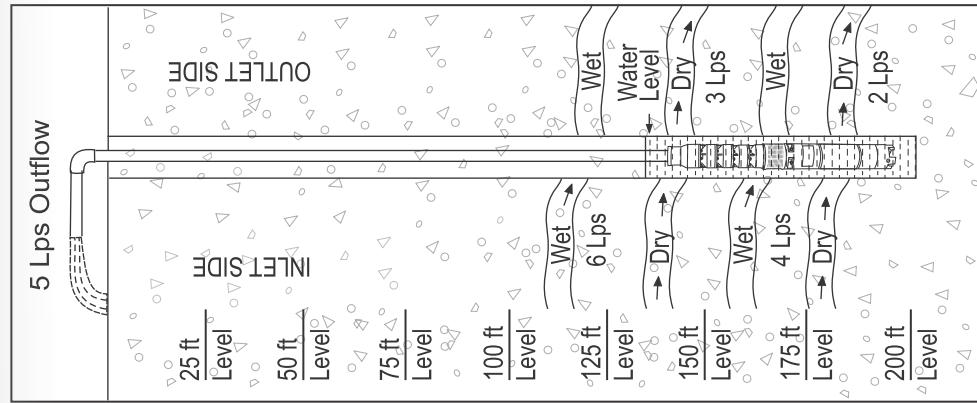
Examples show different combination of Wet and Dry cavities in a Bore well having maximum yield of 10 Lps in flow and pump capacity of maximum 10 Lps output



(A)



(B)

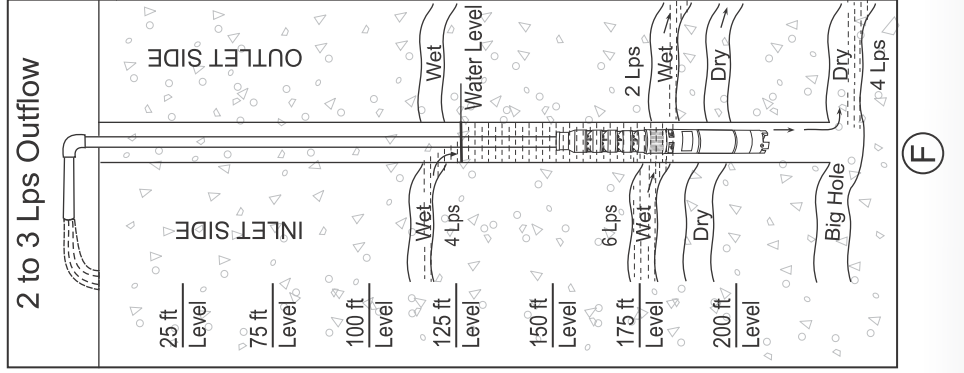
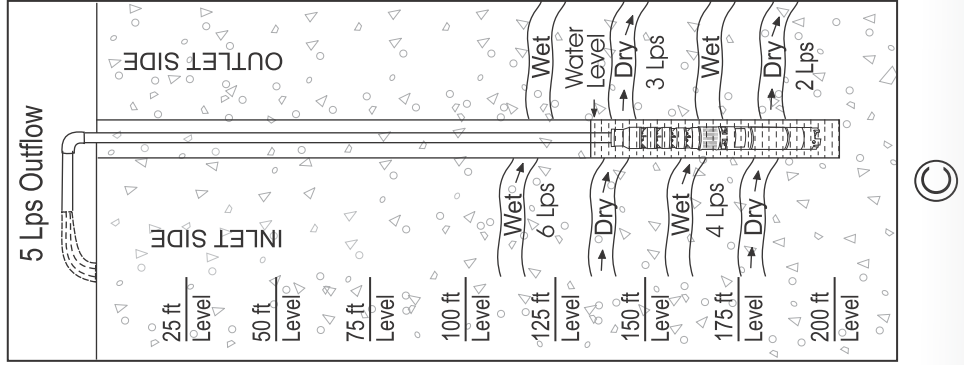
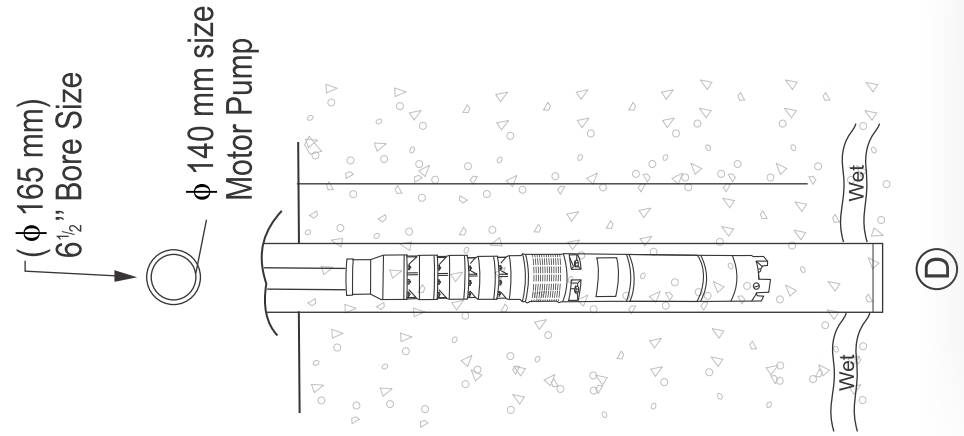


(C)



Examples show different combination of Wet and Dry cavities in a Bore well having maximum yield of 10 Lps in flow and pump capacity of maximum 10 Lps output

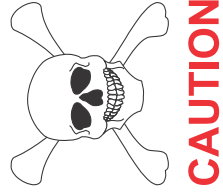
Bore depth 200 Feet - 60 m (approx)



IMPORTANT (F)



Note (Fig F): Incoming stream 10 Lps but there is a dry stream hole at the bottom of borewell having 4 Lps flow area. Hence when motor starts; 2 to 3 Lps will be pumped out (the water flowing down surrounding the pumpset will be pumped) but there is **no stagnant water surrounding the motor. Hence it will heat up and burn after few days of running. This is not Manufacturer's defect but Bore well yield problem.**



Notes :

.....

.....

.....

.....

.....

.....

.....

.....

.....

.....

.....

.....

.....

.....

.....

.....

.....

.....

.....



ARYEN Pumpsets to Your Homes and Farms





IRRIGATION



HIGH RISE BUILDING



SOLAR PUMPS



DRIP IRRIGATION



ARYEN & ARYENVARSHA
are our registered trademarks

HEAD OFFICE - COIMBATORE

SF No. 128/1, Narashimmanaicken Palayam Post, Mettupalayam Road,
Coimbatore - 641 031. Ph : 0422 - 2460056, Mobile : 95855 29272
E-mail : aryenmotors@gmail.com Web : www.aryenmotors.com